



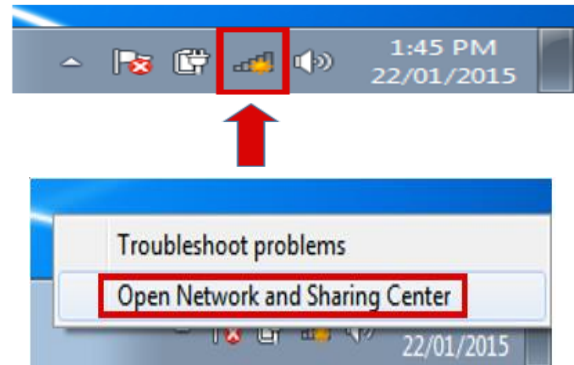
USC Wireless Quick Guide

Connecting to eduroam

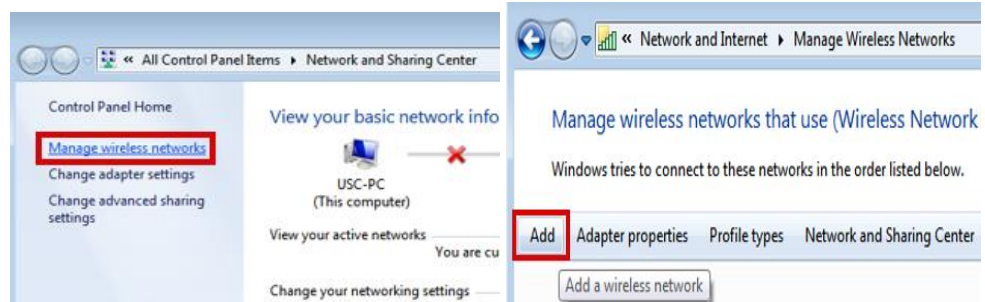
Connecting your Windows 7 laptop

This guide will take you step-by-step through the process of connecting your **Windows 7** laptop to the eduroam wireless network at USC. Simply follow the instructions below:

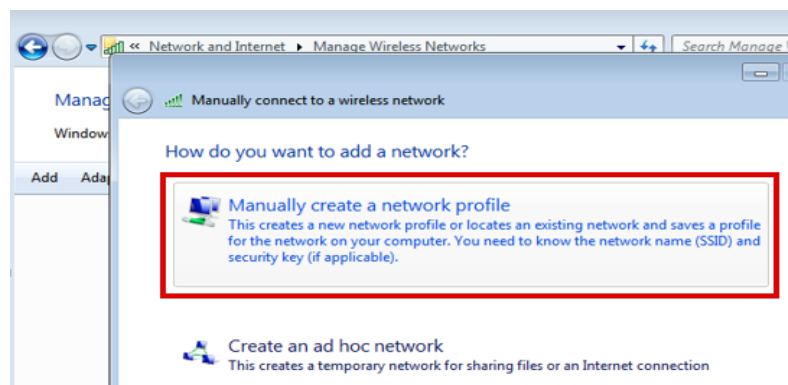
- 1 Once you are logged in to your laptop, right click on the wireless icon in the taskbar (found on the bottom right of the screen) and choose **"Open Network and Sharing Center"**.



- 2 On the screen that appears select **"Manage wireless networks"** (found on the left) then select **"Add"**.



- 3 Now choose to **manually create** a network profile.





USC Wireless Quick Guide

Connecting to eduroam

- 4 In “Network name” type in **eduroam** (all in lowercase) and select **WPA2-Enterprise** from the Security type dropdown, then select next.

Manually connect to a wireless network

Enter information for the wireless network you want to add

Network name: eduroam

Security type: WPA2-Enterprise

Encryption type: AES

Security Key: ☐ Hide characters

☒ Start this connection automatically

☐ Connect even if the network is not broadcasting

Warning: If you select this option, your computer's privacy might be at risk.

Next Cancel

- 5 You should now get a “Successfully added eduroam” message. Choose “**Change connection settings**”.

Manually connect to a wireless network

Successfully added eduroam

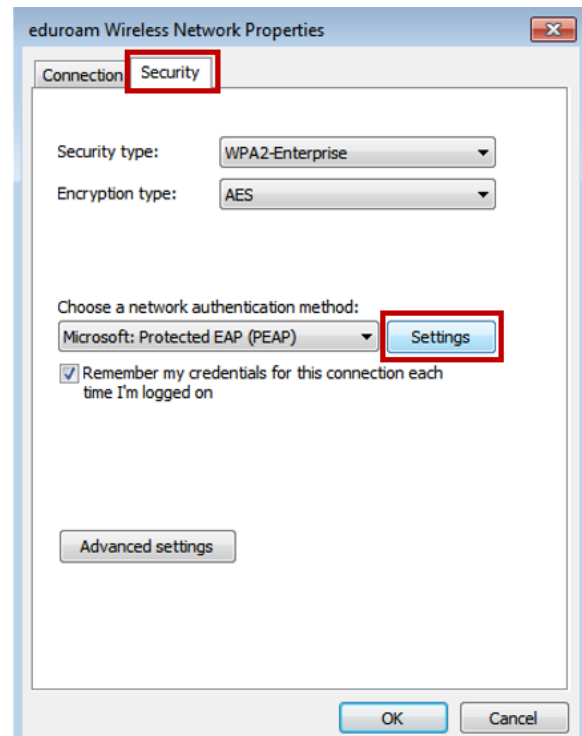
[Change connection settings](#)
Open the connection properties so that I can change the settings.



USC Wireless Quick Guide

Connecting to eduroam

- 6 A Properties screen will now appear. Select **"Security"** (the second tab along the top) then press **"Settings"**



- 7 On the **"Protected EAP Properties"** window, uncheck the validate server certificate and press the **"Configure"** button.





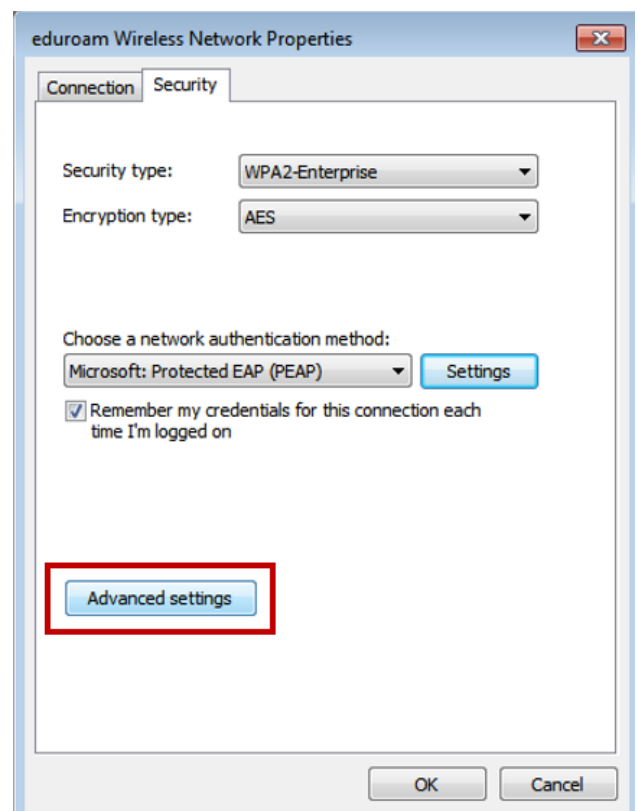
USC Wireless Quick Guide

Connecting to eduroam

- 8 Make sure the check box on the **EAP MSCHAPv2** Properties screen that appears is **un-ticked** and press OK, and then OK again.



- 9 You should be on the **“Security”** tab again. Now select **“Advanced settings”**.

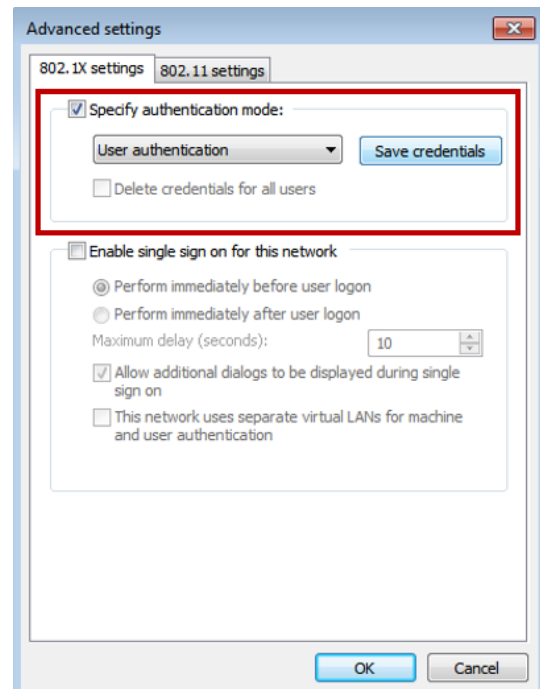




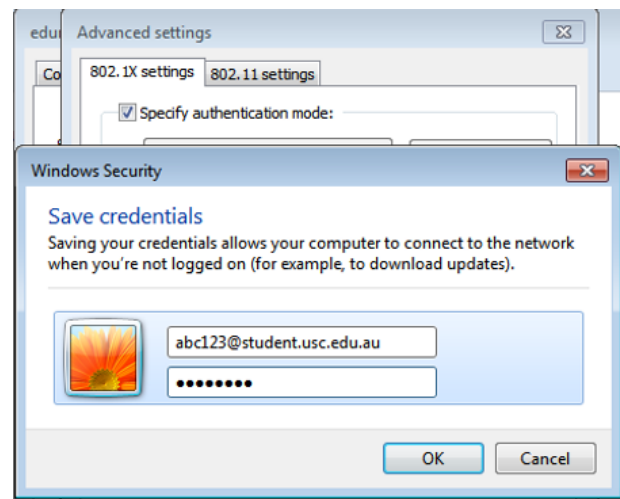
USC Wireless Quick Guide

Connecting to eduroam

- 10 Once in “**Advanced Settings**” tick the “**Specify authentication mode:**” check box (if it is not already) and select “**User authentication**” from the dropdown list.



- 11 Now enter in your **full USC email address** and press OK, and then OK again.

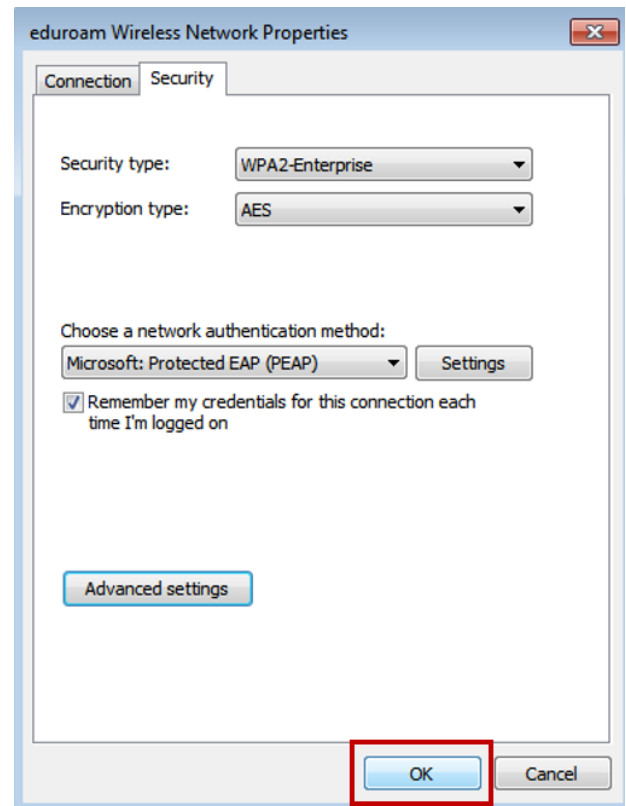




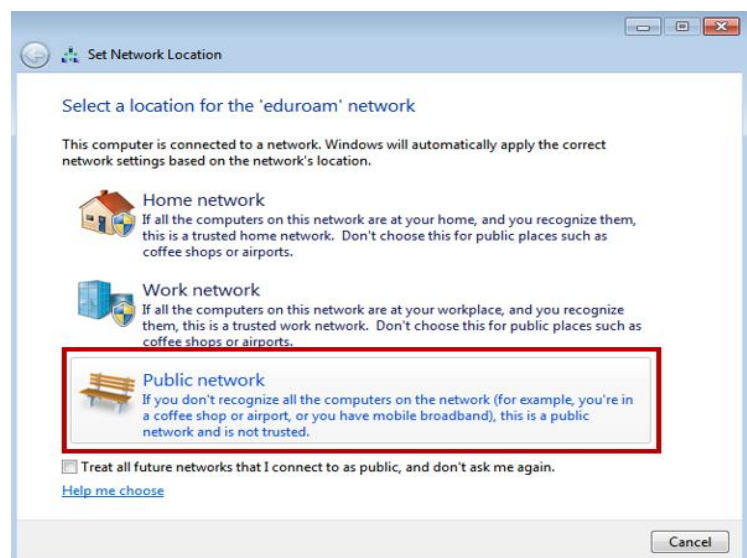
USC Wireless Quick Guide

Connecting to eduroam

- 12 You should once again be on the **“Security”** tab. Press OK one last time to save all the settings for the eduroam network you’ve just created.



- 13 You may find that a **“Set network location”** screen appears for the eduroam network. If it does, please select the **“Public network”** option.





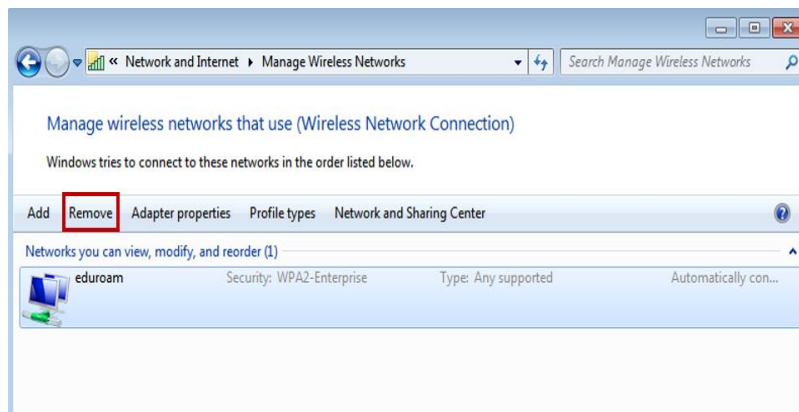
USC Wireless Quick Guide

Connecting to eduroam

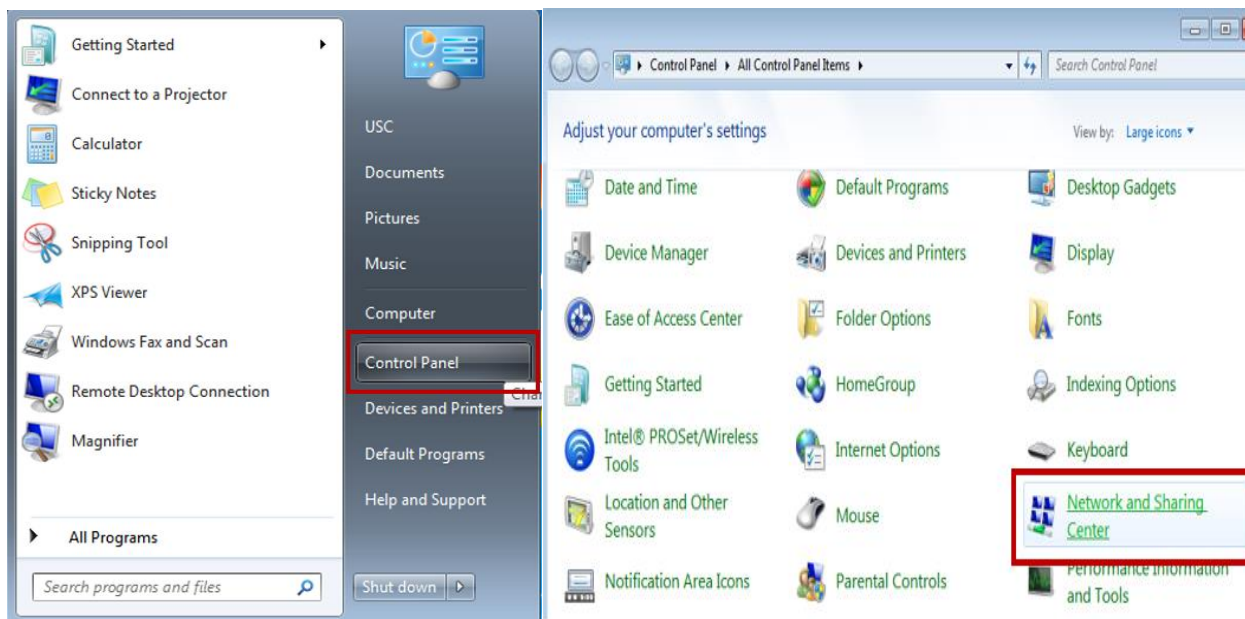
- 14 If your device was connected to eduroam previously and will no longer connect, you will need to modify the settings or remove the settings entirely and start again.

To do this, navigate to “Manage Wireless Network” using steps 1 and 2 or the note on the following page, Select eduroam from the list and click remove.

If you find Connect 2 USC in this list please remove this network as well.



Please note: If your Windows 7 device does not have the wireless icon on the taskbar you can get to the “**Manage Wireless Networks**” screen by going to the “**Control Panel**” and then “**Network and Sharing Center**”.



If your device does not connect after following these steps please contact the Student IT Help Desk if you are a student, or the Staff IT Service Desk if you are a member of staff.

Student IT Help Desk
Tel: +61 7 5459 4455
Counter: Library Information Desk
Email: StudentITHelp@usc.edu.au

Staff IT Services Desk
Tel: +61 7 5430 1237
Counter: Level 4, ICT Centre (Building J)
Email: itservicedesk@usc.edu.au